

# Finch.

Creative Linen  
By Anna Hull

*image page 10*



## SIZE

To fit chest (cm/in)

71-76   81-86   91-97   102-107   112-117   122-127   132-137   142-147   152-157

28-30   32-34   36-38   40-42   44-46   48-50   52-54   56-58   60-62

Actual chest measurement of garment

92.5   103.5   114.5   123.5   134.5   143.5   154.5   163.5   174.5

36½   40¾   45   48½   53   56½   60¾   64¼   68¾

## YARN

**Creative Linen** (100gm)

5   6   6   7   8   8   9   9   10

(photographed in Mustard 647)

## NEEDLES

1 pair 4mm (no 8) (US 6) needles

1 pair 4½mm (no 7) (US 7) needles

**BUTTONS** – 3 xTGB4777 (imitation horn 25mm) and 6 xTGB3020 (grey shank 15mm) both fromTextile Garden.  
Please see information page for contact details.

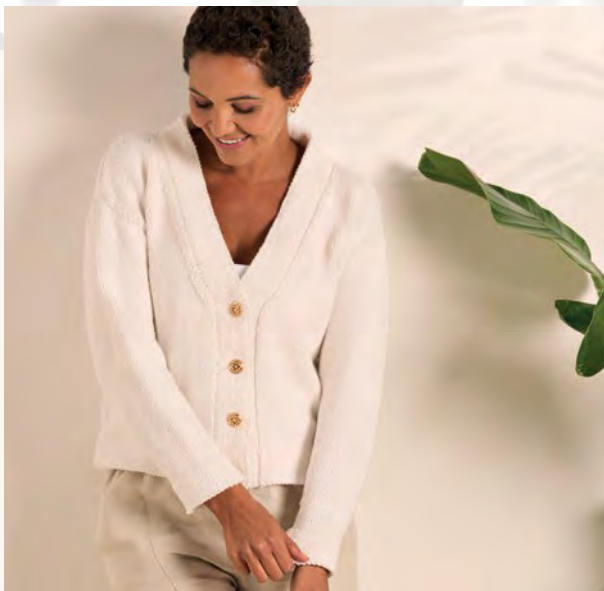
## TENSION

22 sts and 28 rows to 10 cm measured over patt using 4½mm (US 7) needles.

# Eagle.

Four Seasons  
By Quail Studio

image page 12



## SIZE

To fit chest (cm/in)

71-76	81-86	91-97	102-107	112-117	122-127	132-137	142-147	152-157
28-30	32-34	36-38	40-42	44-46	48-50	52-54	56-58	60-62

Actual chest measurement of garment

90	100	110	120	130	140	150	160	170
35½	39¼	43¼	47¼	51¼	55	59	63	67

## YARN

**Four Seasons** (50gm)

14	14	15	16	17	18	19	19	20
----	----	----	----	----	----	----	----	----

(photographed in Frost 001)

## NEEDLES

1 pair 4mm (no 8) (US 6) needles

1 pair 4.5mm (no 7) (US 7) needles

4mm (no 8) (US 6) circular needle meas 100 cm

## TENSION

16 sts and 23 rows to 10 cm measured over st st using 4.5mm (US 7) needles.

## EXTRAS

Stich holder

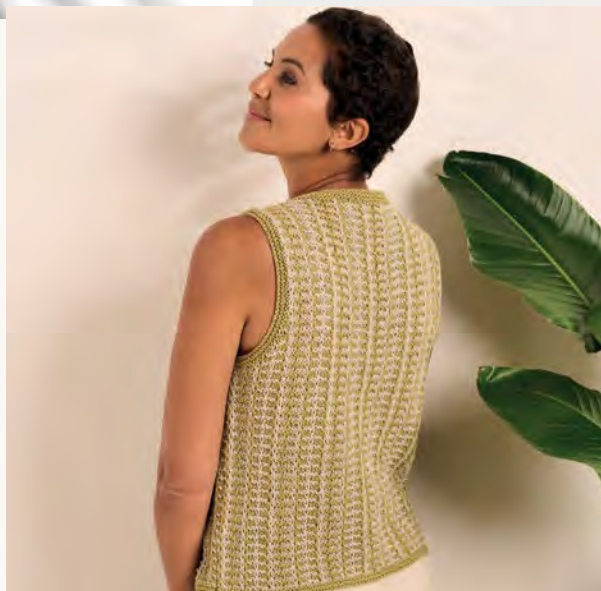
Stitch markers

4 Buttons

# Robin.

Creative Linen  
By Chloe Thurlow

*image page 14*



## SIZE

To fit chest (cm/in)

71-76	81-86	91-97	102-107	112-117	122-127	132-137	142-147	152-157
28-30	32-34	36-38	40-42	44-46	48-50	52-54	56-58	60-62

Actual chest measurement of garment

74	84.5	95	105	115.5	126	136.5	147	157.5
29¼	33¼	37½	41¼	45½	49½	53¾	57¾	62

## YARN

**Creative Linen** (100gm)

A Apple 629

2	2	3	3	3	3	4	4	4
---	---	---	---	---	---	---	---	---

B Silver 650

2	2	2	2	2	2	3	3	3
---	---	---	---	---	---	---	---	---

## NEEDLES

1 pair 4mm (no 8) (US 6) needles

1 pair 4½mm (no 7) (US 7) needles

**BUTTONS** – 7 x TGB5202 (cream coated metal 15mm) from Textile Garden. Please see information page for contact details.

## TENSION

23 sts and 38 rows to 10 cm measured over patt using 4½mm (US 7) needles.



# Ostrich.

Four Seasons  
By Quail Studio

image page 16



## SIZE

To fit chest (cm/in)

71-76	81-86	91-97	102-107	112-117	122-127	132-137	142-147	152-157
28-30	32-34	36-38	40-42	44-46	48-50	52-54	56-58	60-62
Actual chest measurement of garment								
80	90	100	110	120	130	140	150	160
31½	35½	39¼	43¼	47¼	51¼	55	59	63

## YARN

Four Seasons (50gm)

7	8	9	9	10	10	11	11	12
---	---	---	---	----	----	----	----	----

(photographed in Beach 002)

## NEEDLES

1 pair 4.5mm (no 7) (US 7) needles

4.5mm (no 7) (US 7) circular needle 60 cm long

## TENSION

16 sts and 30 rows to 10 cm measured over moss st using 4.5mm (US 7) needles

## EXTRAS

Stitch holders

# Chaffinch.

Creative Linen  
By Lisa Richardson

*image page 18*



## SIZE

To fit chest (cm/in)

71-76	81-86	91-97	102-107	112-117	122-127	132-137	142-147	152-157
28-30	32-34	36-38	40-42	44-46	48-50	52-54	56-58	60-62

Actual chest measurement of garment

90	98	106	122	130	138	154	162	170
35½	38½	41¼	48	51¼	54¼	60¾	63¾	67

## YARN

**Creative Linen** (100gm)

5	5	5	6	6	7	7	8	8
---	---	---	---	---	---	---	---	---

(photographed in Silver 650)

## NEEDLES

1 pair 4mm (no 8) (US 6) needles

1 pair 4½mm (no 7) (US 7) needles

## TENSION

20 sts and 24 rows to 10 cm measured over patt using 4½mm (US 7) needles.

**Pattern note:** The number of sts varies whilst working the pattern. Do **NOT** count sts at the end of RS rows – only count sts at the end of WS rows. All st counts given relate to the original number of sts and do **NOT** take into account sts made on RS rows.

# Pelican.

Creative Linen  
By Lisa Richardson

*image page 20*



## YARN

**Creative Linen** (100gm)

A Teal 625	1
B Natural 621	1
C Foggy 624	1

## NEEDLES

- 1 pair 4½mm (no 7) (US 7) needles
- 2 double-pointed 4mm (no 8) (US 6) needles

## TENSION

26 sts and 66 rows to 10 cm measured over patt using 4½mm (US 7) needles.

## FINISHED SIZE

Completed bag is 25 cm (9¾ in) wide and 13 cm (5 in) tall.

**EXTRAS** – 25 cm (10 in) zip and a piece of lining fabric 30 cm (11¾ in) wide and 45 cm (17¾ in) long.

## SPECIAL ABBREVIATIONS

**yb** = take yarn to back of work; **yft** = bring yarn to front of work.

**Pattern note:** When slipping 3 sts on rows 5, 6, 11 and 12 of patt, take care not to pull the yarn too tightly across the knitted fabric.



# Sparrow.

Creative Linen

By Anna Hull

*image page 22*



## SIZE

To fit chest (cm/in)

71-76    81-86    91-97    102-107    112-117    122-127    132-137    142-147    152-157

28-30    32-34    36-38    40-42    44-46    48-50    52-54    56-58    60-62

Actual chest measurement of garment

87.5    97.5    107.5    117.5    127.5    137.5    147.5    157.5    167.5

34½    38½    42¼    46¼    50¼    54¼    58    62    66

## YARN

**Creative Linen** (100gm)

4    5    5    6    6    7    7    8    8

(photographed in Apple 629)

## NEEDLES

1 pair 4mm (no 8) (US 6) needles

1 pair 4½mm (no 7) (US 7) needles

**BUTTONS** – 10 xTGB4083 (wood 15mm) from Textile Garden. Please see information page for contact details.

## TENSION

24 sts and 27 rows to 10 cm measured over patt using 4½mm (US 7) needles.

# Swan.

Creative Linen

By Lisa Richardson

image page 24



## SIZE

To fit chest (cm/in)

71-76	81-86	91-97	102-107	112-117	122-127	132-137	142-147	152-157
28-30	32-34	36-38	40-42	44-46	48-50	52-54	56-58	60-62

Actual chest measurement of garment

88.5	99	109.5	120	130.5	141	151.5	161.5	172
34¾	39	43	47¼	51½	55½	59¾	63½	67¾

## YARN

**Creative Linen** (100gm)

A Stormy 635

3	4	4	4	5	5	6	6	6
---	---	---	---	---	---	---	---	---

B Silver 650

3	4	4	4	5	5	6	6	6
---	---	---	---	---	---	---	---	---

## NEEDLES

1 pair 4½mm (no 7) (US 7) needles

**BUTTONS** – 3 x TGB4989 (black coated metal 20mm) from Textile Garden. Please see information page for contact details.

## TENSION

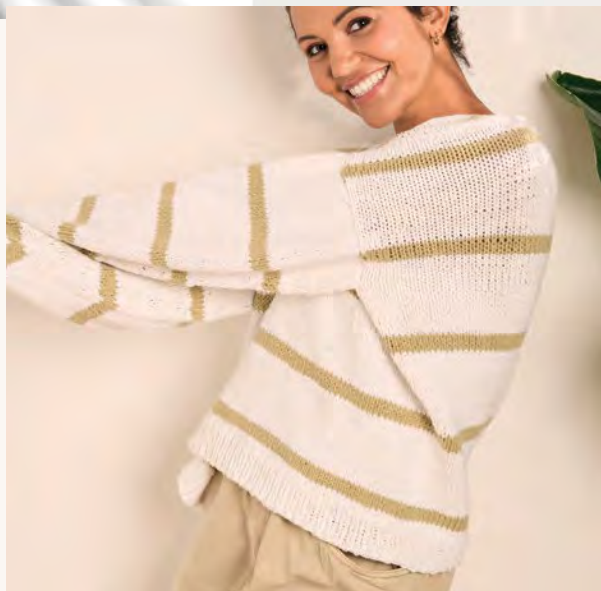
23 sts and 40 rows to 10 cm measured over patt using 4½mm (US 7) needles.



# Swallow.

Four Seasons  
By Quail Studio

image page 26



*In the round seamless*

## SIZE

To fit chest (cm/in)

71-76 81-86 91-97 102-107 112-117 122-127 132-137 142-147 152-157

28-30 32-34 36-38 40-42 44-46 48-50 52-54 56-58 60-62

Actual chest measurement of garment

93 104.5 113 124.5 133 144.5 153 164.5 173

36½ 41¼ 44½ 49 52¼ 57 60¼ 64¾ 68

## YARN

**Four Seasons** (50gm)

A Frost 001

10 11 12 13 14 16 17 18 19

B Spring 004

2 2 3 3 3 3 4 4 4

## NEEDLES

5.5mm (no 5) (US 9) circular needle no more than 80 [80: 100: 100: 120: 120: 120: 140: 140] cm in length

1 pair 5.5mm (no 5) (US 9) needles

5.5mm (no 5) (US 9) dps (for sleeves, or use circular needle and the magic loop method)

## TENSION

18 sts and 25 rows/rounds to 10 cm measured over st st using 5.5mm (US 9) needles.

## EXTRAS

Stitch marker

Stitch holders

# Falcon.

Four Seasons  
By Quail Studio

*image page 28*



## SIZE

To fit chest (cm/in)

71-76	81-86	91-97	102-107	112-117	122-127	132-137	142-147	152-157
28-30	32-34	36-38	40-42	44-46	48-50	52-54	56-58	60-62

Actual chest measurement of garment

99	110	121	130	141	152	160	172	182
39	43½	47¾	51	55½	59¾	63	67¾	71¾

## YARN

**Four Seasons** (50gm)

15	16	18	18	20	20	21	22	23
----	----	----	----	----	----	----	----	----

(photographed in Frost 001)

## NEEDLES

1 pair 6mm (no 4) (US 10) needles

6mm (no 4) (US 10) circular needles at least 140 cm long

## TENSION

14.5 sts and 25 rows to 10 cm measured over pattern using 6mm (US 10) needles

## EXTRAS

Stitch holders

Stitch markers

# Swift.

Four Seasons  
By Quail Studio

*image page 30*



## SIZE

To fit chest (cm/in)

71-76	81-86	91-97	102-107	112-117	122-127	132-137	142-147	152-157
28-30	32-34	36-38	40-42	44-46	48-50	52-54	56-58	60-62
Actual chest measurement of garment								
82.5	92.5	102.5	112.5	122.5	132.5	142.5	152.5	162.5
32½	36½	40¼	44¼	48¼	52¼	56	60	64

## YARN

**Four Seasons** (50gm)

7	7	7	8	8	9	9	10	10
---	---	---	---	---	---	---	----	----

(photographed in Blossom 006)

## NEEDLES

1 pair 4.5mm (no 7) (US 7) needles

1 pair 5mm (no 6) (US 8) needles

## TENSION

16 sts and 24 rows to 10 cm measured over st st using 5mm (US 8) needles

## EXTRAS

Stitch markers

Stitch holders



# Kingfisher.

Four Seasons  
By Quail Studio

*image page 32*



## SIZE

To fit chest (cm/in)

71-76	81-86	91-97	102-107	112-117	122-127	132-137	142-147	152-157
28-30	32-34	36-38	40-42	44-46	48-50	52-54	56-58	60-62

Actual chest measurement of garment

100	110.5	118.5	129.5	140	150.5	158.5	169.5	180
39¼	43½	46¾	50¾	55	59¼	62½	66¾	70¾

## YARN

Four Seasons (50gm)

9	10	12	13	14	16	17	18	20
---	----	----	----	----	----	----	----	----

(photographed in Bluebell 007)

## NEEDLES

1 pair 5mm (no 6) (US 8) needles

5mm (no 6) (US 8) circular needle meas 40cm for neckband

## TENSION

15 sts and 22 rows to 10 cm measured over st st using 5mm (US 8) needles.

## EXTRAS

Stitch holders

Stitch marker

# Cuckoo.

Four Seasons  
By Quail Studio

*image page 34*



## SIZE

To fit chest (cm/in)

71-76   81-86   91-97   102-107   112-117   122-127   132-137   142-147   152-157

28-30   32-34   36-38   40-42   44-46   48-50   52-54   56-58   60-62

Actual chest measurement of garment

83   95.5   104.5   114   123   129   144.5   154   163

32¾   36½   40½   44½   48½   52¼   56¼   60¼   64¼

## YARN

Four Seasons (50gm)

7   8   9   10   11   12   14   15   16

(photographed in Twilight 008)

## NEEDLES

1 pair 5mm (no 6) (US 8) needles

## TENSION

13 sts and 30 rows (15 visible rows) to 10 cm measured over brioche rib pattern using 5mm (US 8) needles

## EXTRAS

Stitch markers

Stitch holders

# Heron.

Four Seasons  
By Quail Studio

*image page 36*



## SIZE

To fit chest (cm/in)

71-76	81-86	91-97	102-107	112-117	122-127	132-137	142-147	152-157
28-30	32-34	36-38	40-42	44-46	48-50	52-54	56-58	60-62

Actual chest measurement of garment

100	110	120	130	140	150	160	170	180
39¼	43¼	47¼	51¼	55	59	63	67	70¾

## YARN

**Four Seasons** (50gm)

16	17	18	19	20	21	22	23	24
----	----	----	----	----	----	----	----	----

(photographed in Bluebell 007)

## NEEDLES

1 pair 5mm (no 6) (US 8) needles

1 pair 5.5mm (no 5) (US 9) needles

1 5mm (no 6) (US 8) circular needle meas 40cm

## TENSION

18 sts and 25 rows to 10 cm measured over st st using 5.5mm (US 9) needles.

## EXTRAS

Stitch markers

Stitch holders