



MINI CELLO



BY GEORGIA FARRELL

SIZE

To fit age (years)

3-4	5-6	7-8	9-10	11-12
To fit chest (cm/in)				
53-56	59-61	63-66	70-73	76-79
21-22	23-24	25-26	27-29	30-31
Actual chest measurement of garment (cm/in)				
64	70	75.5	81	86.5
25¼	27½	29¾	32	34

YARN

Cotton Cashmere (50gm)

4 4 5 5 5

(photographed in Ecrú 226)

NEEDLES

1 pair 4mm (no 8) (US 6) needles
 3.25mm (no 10) (US 3) circular needles no more than
 30 cm long

TENSION

21.5 sts and 30 rows to 10 cm measured over patt using
 4mm (US 6) needles.

EXTRAS

Stitch holders





MINI SAND



BY QUAIL STUDIO

SIZE

To fit age (years)

3-4	5-6	7-8	9-10	11-12
-----	-----	-----	------	-------

To fit chest (cm/in)

53-56	59-61	63-66	70-73	76-79
21-22	23-24	25-26	27-29	30-31

Actual chest measurement of garment (cm/in)

68	73.5	77.5	84.5	90
26¾	29	30½	33¼	35½

YARN

Summerlite DK (50gm)

5	5	6	6	7
---	---	---	---	---

(photographed in Giggle 479)

NEEDLES

1 pair 3.75mm (no 9) (US 5) needles

TENSION

22 sts and 30 rows to 10 cm measured over st st using 3.75mm (US 5) needles.

EXTRAS

Stitch holders

5 [5: 6: 6: 6] buttons



MINI BANK



BY QUAIL STUDIO

SIZE

To fit age (years)				
3-4	5-6	7-8	9-10	11-12
To fit chest (cm/in)				
53-56	59-61	63-66	70-73	76-79
21-22	23-24	25-26	27-29	30-31
Actual chest measurement of garment (cm/in)				
67.5	75	77.5	85	90
26½	29½	30½	33½	35½

YARN

Four Seasons (50gm)

A Twilight 008				
6	6	7	7	8
B Frost 001				
4	4	5	5	6

NEEDLES

- 1 pair 4mm (no 8) (US 6) needles
- 1 pair 4.5mm (no 7) (US 7) needles
- 4mm (no 8) (US 6) double pointed needles

TENSION

16 sts and 23 rows to 10 cm measured over rev st st using 4.5mm (US 7) needles.

EXTRAS

Stitch holders



MINI HUXLEY



BY MARTIN STOREY

SIZE

To fit age (years)

3-4 5-6 7-8 9-10 11-12

To fit chest (cm/in)

53-56 59-61 63-66 70-73 76-79

21-22 23-24 25-26 27-29 30-31

Actual chest measurement of garment (cm/in)

63 68.5 74 81 86

24¾ 27 29¼ 32 34¾

YARN

Alpaca Soft DK (50gm)

3 3 4 4 4

(photographed in Hunter Green 214 & Blue Haze 232)

Summerlite DK (50gm)

3 3 4 4 4

(photographed in Mushroom 454)

NEEDLES

1 pair 3.25mm (no 10) (US 3) needles

1 pair 4mm (no 8) (US 6) needles

3.25mm (no 10) (US 3) circular needles no more than 40 cm long

TENSION

22 sts and 30 rows to 10 cm measured over st st, 23 sts and

31 rows to 10 cm measured over patt, both using 4mm

(US 6) needles.

EXTRAS

Stitch holders

Safety pin



MINI FORMENTOR



BY QUAIL STUDIO

SIZE

To fit age (years)

3-4	5-6	7-8	9-10	11-12
-----	-----	-----	------	-------

To fit chest (cm/in)

53-56	59-61	63-66	70-73	76-79
21-22	23-24	25-26	27-29	30-31

Actual chest measurement of garment (cm/in)

69.5	73.5	78	84	90.5
27¼	29	30¾	33	35¾

YARN

Handknit Cotton (50gm)

A Ecrú 251

3	4	4	5	5
---	---	---	---	---

B Forest 370

1	1	1	2	2
---	---	---	---	---

NEEDLES

1 pair 3.5mm (no 10/9) (US 4) needles

1 pair 4mm (no 8) (US 6) needles

TENSION

19 sts and 28 rows to 10 cm measured over st st using 4mm (US 6) needles.

EXTRAS

Stitch holders

15 [15: 15: 18: 20] cm zip



MINI BAY



BY MARTIN STORY

SIZE

To fit age (years)

3-4	5-6	7-8	9-10	11-12
To fit chest (cm/in)				
53-56	59-61	63-66	70-73	76-79
21-22	23-24	25-26	27-29	30-31
Actual chest measurement of garment (cm/in)				
110.5	116	122	127.5	133.5
43½	45¾	48	50¼	52½

YARN

Handknit Cotton (50gm)

9 9 10 10 11

(photographed in Blushes 378)

NEEDLES

1 pair 3.25mm (no 10) (US 3) needles

1 pair 4mm (no 8) (US 6) needles

3.25mm (no 10) (US 3) double pointed needles

TENSION

21 sts and 28 rows to 10 cm measured over body patt, 22 sts and 28 rows to 10 cm measured over sleeve patt, both using 4mm (US 6) needles.

EXTRAS

Stitch holders

Stitch markers



MINI GANDY



BY QUAIL STUDIO

SIZE

To fit age (years)

3-4	5-6	7-8	9-10	11-12
-----	-----	-----	------	-------

To fit chest (cm/in)

53-56	59-61	63-66	70-73	76-79
-------	-------	-------	-------	-------

21-22	23-24	25-26	27-29	30-31
-------	-------	-------	-------	-------

Actual chest measurement of garment (cm/in)

71	77	81	87	93
----	----	----	----	----

28	30¼	32	34¼	36½
----	-----	----	-----	-----

YARN

Alpaca Soft DK (50gm)

5	5	6	6	7
---	---	---	---	---

(photographed in Rainy Day 210)

NEEDLES

1 pair 4mm (no 8) (US 6) needles

4mm (no 8) (US 6) double pointed needles

TENSION

20 sts and 35 rows to 10 cm measured over patt using

4mm (US 6) needles.

EXTRAS

Stitch holders

Stitch markers



MINI WHITEHALL



BY QUAIL STUDIO

SIZE

To fit age (years)

3-4	5-6	7-8	9-10	11-12
-----	-----	-----	------	-------

To fit chest (cm/in)

53-56	59-61	63-66	70-73	76-79
-------	-------	-------	-------	-------

21-22	23-24	25-26	27-29	30-31
-------	-------	-------	-------	-------

Actual chest measurement of garment (cm/in)

87.5	94	97	103	109
------	----	----	-----	-----

34½	37	38¾	40½	43
-----	----	-----	-----	----

YARN

Brushed Fleece (50gm)

5	6	6	6	7
---	---	---	---	---

(photographed in Hush 270)

NEEDLES

1 pair 6mm (no 4) (US 10) needles

6mm (no 4) (US 10) double pointed needles

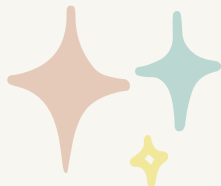
TENSION

13 sts and 19 rows to 10 cm measured over st st using 6mm (US 10) needles.

EXTRAS

Stitch markers

Stitch holders





MINI MANOR



BY QUAIL STUDIO

SIZE

To fit age (years)

3-4	5-6	7-8	9-10	11-12
-----	-----	-----	------	-------

To fit chest (cm/in)

53-56	59-61	63-66	70-73	76-79
-------	-------	-------	-------	-------

21-22	23-24	25-26	27-29	30-31
-------	-------	-------	-------	-------

Actual chest measurement of garment (cm/in)

87.5	93.5	97.5	103.5	109.5
------	------	------	-------	-------

34½	36¾	38½	40¾	43
-----	-----	-----	-----	----

YARN

Cotton Cashmere (50gm)

A Paper 210

4	4	5	5	6
---	---	---	---	---

B Harbour 223

1	1	1	2	2
---	---	---	---	---

NEEDLES

1 pair 3.5mm (no 10/9) (US 4) needles

1 pair 4mm (no 8) (US 6) needles

3.5mm (no 10/9) (US 4) circular needle at least 120 [130: 140: 140: 150] cm long

TENSION

20 sts and 28 rows to 10 cm measured over st st using 4mm (US 6) needles.

EXTRAS

Stitch holders

Stitch markers



MINI ROCHA



BY QUAIL STUDI

SIZE

To fit age (years)

3-4	5-6	7-8	9-10	11-12
To fit chest (cm/in)				
53-56	59-61	63-66	70-73	76-79
21-22	23-24	25-26	27-29	30-31
Actual chest measurement of garment (cm/in)				
92	97.5	102.5	108	113.5
36¼	38½	40¼	42½	44¾

YARN

Four Seasons (50gm)

Sweater with sleeves

12	12	13	13	14
----	----	----	----	----

(photographed in Blossom 006)

Sleeveless sweater

9	10	10	11	11
---	----	----	----	----

(photographed in Bluebell 007)

NEEDLES

1 pair 5mm (no 6) (US 8) needles

5mm (no 6) (US 8) double pointed needles

TENSION

15 sts and 22 rows to 10 cm measured over st st using 5mm (US 8) needles.

EXTRAS

Stitch holders



MINI OXFORD



BY QUAIL STUDIO

SIZE

To fit age (years)

3-6 6-9 9-12

Circumference around head (cm/in)

42.5 46 49.5

16¾ 18 19½

YARN

Alpaca Soft DK (50gm)

2 2 3

(photographed in Blue Haze 232, Hunter Green 214, Rainy Day 210, Verdigris 233 & Blossom 223)

NEEDLES

Set of 4 double-pointed 3.25mm (no 10) (US 3) needles

TENSION

34 sts and 34 rounds to 10 cm measured over rib unstretched using 3.25mm (US 3) needles.

EXTRAS

Stitch markers



MINI ROCHA COWL



BY QUAIL STUDIO

SIZE

To fit age (years)

3-4 5-6 7-8 9-10 11-12

FINISHED SIZE

Neck circumference

36 [40: 44: 44: 48] cm

14¼ [15¼: 17¼: 17¼: 19] in

Cowl depth

24 [27: 30: 32: 34] cm

9½ [10¾: 11¾: 12½: 13½] in

YARN

Four Seasons (50gm)

2 3 3 3 3

(photographed in Blossom 006 & Bluebell 007)

NEEDLES

Set of 5mm (no 6) (US 8) dpns (double-pointed needles) or circular needles 40 cm long

TENSION

15 sts and 22 rounds to 10 cm measured over st st using 5mm (US 8) needles.



MINI BLUE



BY QUAIL STUDIO

SIZE

To fit age (years)

3-4	5-6	7-8	9-10	11-12
To fit chest (cm/in)				
53-56	59-61	63-66	70-73	76-79
21-22	23-24	25-26	27-29	30-31
Actual chest measurement of garment (cm/in)				
66.5	72	75.5	82.5	88
26¼	28¼	29¾	32½	34¾

YARN

Alpaca Soft DK (50gm)

6 6 7 7

(photographed in Verdigris 233)

NEEDLES

1 pair 4mm (no 8) (US 6) needles

TENSION

22 sts and 30 rows to 10 cm measured over st st using 4mm (US 6) needles.

EXTRAS

Stitch holders

Stitch markers

15 [15: 18: 18: 20] cm zip