



Summer White ●○○○

Annika Andrea Wolke

FINISHED SIZE

Completed shawl is 39 cm (15¼ in) at widest point and 231 cm (91 in) long.

YARN

Summerlite DK

5 x 50gm
(photographed in White 465)

NEEDLES

1 pair 3¾mm (no 9) (US 5) needles

TENSION

21 sts and 32 rows to 10 cm / 4 in measured over patt using 3¾mm (US 5) needles.



Sage ●●●○

Chloe Thurlow

SIZE

Actual hip measurement of garment, approx 15 cm,
(6 in), below waist

| | | | | | |
|-----|-----|-----|-----|-----|----|
| 92 | 102 | 112 | 122 | 132 | cm |
| 36¼ | 40¼ | 44 | 48 | 52 | in |

YARN

Cotton Cashmere

| | | | | | |
|---|---|---|---|---|--------|
| 4 | 5 | 5 | 6 | 6 | x 50gm |
|---|---|---|---|---|--------|

(photographed in Dark Olive 218)

NEEDLES

1 pair 3½mm (no 10/9) (US 4) needles

1 pair 4mm (no 8) (US 6) needles

2 double-pointed 3½mm (no 10/9) (US 4) needles

TENSION

20 sts and 28 rows to 10 cm / 4 in measured over st
st using 4mm (US 6) needles.



Dijon ●●○○

Georgia Farrell

SIZE

To fit bust

| | | | | | |
|-------|-------|---------|---------|---------|----|
| 81-86 | 91-97 | 102-107 | 112-117 | 122-127 | cm |
| 32-34 | 36-38 | 40-42 | 44-46 | 48-50 | in |

Actual bust measurement of garment

| | | | | | |
|------|-----|-------|-----|-------|----|
| 90.5 | 101 | 109.5 | 120 | 130.5 | cm |
| 35¾ | 39¾ | 43 | 47¼ | 51½ | in |

YARN

Cotton Glace

7 7 8 8 8 x 50gm
 (photographed in Dijon 739, Ecrú 725 & Bleached 727)

NEEDLES

1 pair 3¼mm (no 10) (US 3) needles
 Cable needle

TENSION

23 sts and 44 rows to 10 cm / 4 in measured over
 patt using 3¼mm (US 3) needles.



Pepper ●●○○

Georgia Farrell

SIZE

To fit bust

| | | | | | |
|-------|-------|---------|---------|---------|----|
| 81-86 | 91-97 | 102-107 | 112-117 | 122-127 | cm |
| 32-34 | 36-38 | 40-42 | 44-46 | 48-50 | in |

Actual bust measurement of garment

| | | | | | |
|-----|-----|-----|-----|-----|----|
| 114 | 124 | 134 | 144 | 154 | cm |
| 45 | 48¾ | 52¾ | 56¾ | 60¾ | in |

YARN

Summerlite 4 ply

| | | | | | |
|---|---|---|---|---|--------|
| 6 | 6 | 7 | 7 | 8 | x 50gm |
|---|---|---|---|---|--------|

(photographed in Pepperpot 431 & Ecrú 436)

NEEDLES

1 pair 3mm (no 11) (US 2/3) needles

3mm (no 11) (US 2/3) circular needle at least 100 cm long

TENSION

24 sts and 28 rows to 10 cm / 4 in measured over patt using 3mm (US 2/3) needles.



Honey ●●●○

Jen Geigley

SIZE

To fit bust

| | | | | | |
|-------|-------|---------|---------|---------|----|
| 81-86 | 91-97 | 102-107 | 112-117 | 122-127 | cm |
| 32-34 | 36-38 | 40-42 | 44-46 | 48-50 | in |

Actual bust measurement of garment

| | | | | | |
|------|-------|-----|-----|-------|----|
| 98.5 | 107.5 | 117 | 126 | 135.5 | cm |
| 38¾ | 42¼ | 46 | 49½ | 53¼ | in |

YARN

Cotton Cashmere

| | | | | | |
|----|----|----|----|----|--------|
| 10 | 10 | 11 | 11 | 12 | x 50gm |
|----|----|----|----|----|--------|

(photographed in Paper 210)

NEEDLES

1 pair 4mm (no 8) (US 6) needles

Cable needle

TENSION

26 sts and 32 rows to 10 cm / 4 in measured over patt using 4mm (US 6) needles.



Juniper ●●○○

Lisa Richardson

SIZE

To fit bust

| | | | | | |
|-------|-------|---------|---------|---------|----|
| 81-86 | 91-97 | 102-107 | 112-117 | 122-127 | cm |
| 32-34 | 36-38 | 40-42 | 44-46 | 48-50 | in |

Actual bust measurement of garment

| | | | | | |
|-----|-------|-----|-------|-----|----|
| 115 | 123.5 | 134 | 144.5 | 155 | cm |
| 45¼ | 48½ | 52¾ | 57 | 61 | in |

YARN

Summerlite 4 ply and Kidsilk Haze

A 4 ply Pepper Pot 431

| | | | | | |
|---|---|---|---|---|--------|
| 2 | 3 | 3 | 4 | 4 | x 50gm |
|---|---|---|---|---|--------|

B 4 ply Green Bay 445

| | | | | | |
|---|---|---|---|---|--------|
| 4 | 4 | 5 | 5 | 6 | x 50gm |
|---|---|---|---|---|--------|

C 4 ply Seashell 437

| | | | | | |
|---|---|---|---|---|--------|
| 2 | 3 | 3 | 4 | 4 | x 50gm |
|---|---|---|---|---|--------|

D KSH Drab 611

| | | | | | |
|---|---|---|---|---|--------|
| 3 | 3 | 4 | 4 | 5 | x 25gm |
|---|---|---|---|---|--------|

E KSH Cream 634

| | | | | | |
|---|---|---|---|---|--------|
| 4 | 5 | 5 | 6 | 6 | x 25gm |
|---|---|---|---|---|--------|

NEEDLES

1 pair 3mm (no 11) (US 2/3) needles

1 pair 3¼mm (no 10) (US 3) needles

3mm (no 11) (US 2/3) circular needle at least 100 cm long

Set of 4 double-pointed 3¼mm (no 10) (US 3) needles

TENSION

23 sts and 31 rows to 10 cm / 4 in measured over st using 3¼mm (US 3) needles and one strand each of Kidsilk Haze and Summerlite 4 ply held together.



Greenbay ●●●○

Lisa Richardson

SIZE

To fit bust

| | | | | | |
|-------|-------|---------|---------|---------|----|
| 81-86 | 91-97 | 102-107 | 112-117 | 122-127 | cm |
| 32-34 | 36-38 | 40-42 | 44-46 | 48-50 | in |

Actual bust measurement of garment

| | | | | | |
|------|-------|-------|-------|-------|----|
| 95.5 | 105.5 | 115.5 | 125.5 | 135.5 | cm |
| 37½ | 41½ | 45½ | 49½ | 53¼ | in |

YARN

Summerlite 4 ply

| | | | | | |
|---|---|---|---|---|--------|
| 4 | 5 | 5 | 6 | 6 | x 50gm |
|---|---|---|---|---|--------|

(photographed in Green Bay 445 & Ecrú 436)

NEEDLES

1 pair 3mm (no 11) (US 2/3) needles
Cable needle

TENSION

24 sts and 51 rows to 10 cm / 4 in measured over
patt using 3mm (US 2/3) needles.



E cru ●●○○

Jen Geigley

FINISHED SIZE

Completed wrap is 56 cm (22 in) at widest point and 196 cm (77¼ in) long

YARN

Cotton Cashmere

5 x 50gm
(photographed in E cru 226)

NEEDLES

1 pair 4mm (no 8) (US 6) needles

TENSION

20 sts and 28 rows to 10 cm / 4 in measured over st st using 4mm (US 6) needles.



Powder ●●●○

Martin Storey

SIZE

To fit bust

| | | | | | |
|-------|-------|---------|---------|---------|----|
| 81-86 | 91-97 | 102-107 | 112-117 | 122-127 | cm |
| 32-34 | 36-38 | 40-42 | 44-46 | 48-50 | in |

Actual bust measurement of garment

| | | | | | |
|-----|-------|-------|-------|-----|----|
| 112 | 122.5 | 131.5 | 141.5 | 152 | cm |
| 44 | 48¼ | 51¾ | 55¾ | 59¾ | in |

YARN

Cotton Glace

| | | | | | |
|----|----|----|----|----|--------|
| 13 | 14 | 14 | 15 | 15 | x 50gm |
|----|----|----|----|----|--------|

(photographed in Bleached 726)

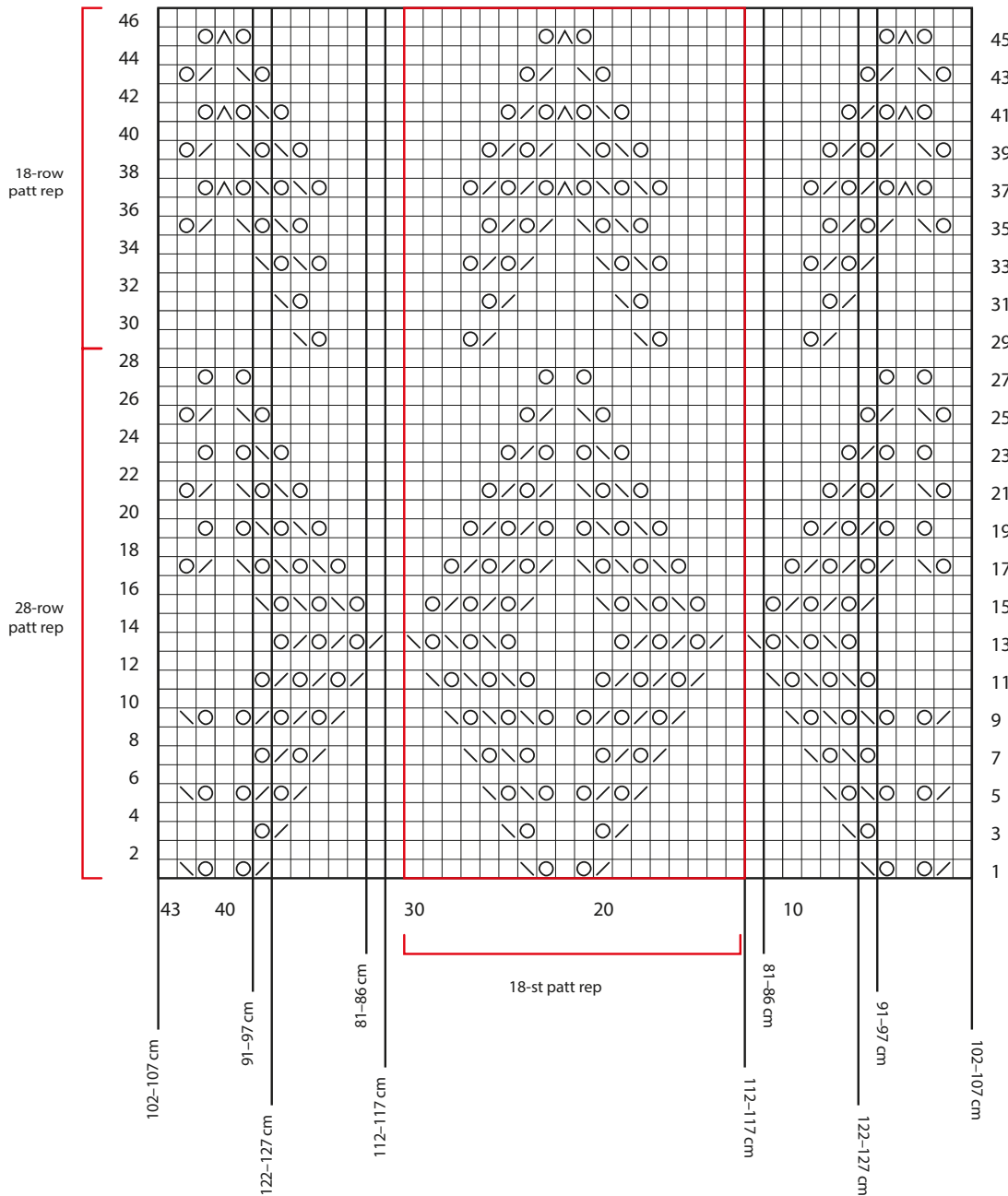
NEEDLES

- 1 pair 2¾mm (no 12) (US 2) needles
- 1 pair 3¼mm (no 10) (US 3) needles
- 2 double-pointed 2¾mm (no 12) (US 2) needles

TENSION

23 sts and 34 rows to 10 cm / 4 in measured over patt using 3¼mm (US 3) needles.

Powder Body Chart



Key

- K on RS rows, P on WS rows
- P on RS rows, K on WS rows
- K2tog
- sl1, K1, pss0
- yfwd
- sl1, K2tog, pss0
- sl2 sts as if to K2tog, K1, pass 2 slipped sts over



Ombre ●○○○

Quail Studio

FINISHED SIZE

Completed wrap is 28 cm (11 in) wide and 200 cm (78¾ in) long

YARN

Kidsilk Haze

A Drab 611

2 x 25gm

B Cream 634

2 x 25gm

C White 612

2 x 25gm

NEEDLES

1 pair 4½mm (no 7) (US 7) needles

TENSION

21 sts and 25 rows to 10 cm / 4 in measured over st st using 4½mm (US 7) needles and 2 strands of yarn held together.



Silk ●●○○

Quail Studio

SIZE

To fit bust

| | | | | | |
|-------|-------|---------|---------|---------|----|
| 81-86 | 91-97 | 102-107 | 112-117 | 122-127 | cm |
| 32-34 | 36-38 | 40-42 | 44-46 | 48-50 | in |

Actual bust measurement of garment

| | | | | | |
|-----|-------|-----|-------|-----|----|
| 93 | 104.5 | 113 | 124.5 | 133 | cm |
| 36½ | 41¼ | 44½ | 49 | 52¼ | in |

YARN

Cotton Glace

Short Version

| | | | | | |
|----|----|----|----|----|--------|
| 10 | 10 | 11 | 11 | 12 | x 50gm |
|----|----|----|----|----|--------|

(photographed in Bleached 726)

Long Version

| | | | | | |
|----|----|----|----|----|--------|
| 12 | 13 | 13 | 14 | 14 | x 50gm |
|----|----|----|----|----|--------|

(photographed in Bleached 726)

NEEDLES

1 pair 3¼mm (no 10) (US 3) needles

3¼mm (no 10) (US 3) circular needle at least 80 cm long

TENSION

28 sts and 34 rows to 10 cm / 4 in measured over rib using 3¼mm (US 3) needles.



Floss ●●○○

Quail Studio

SIZE

To fit bust

| | | | | | |
|-------|-------|---------|---------|---------|----|
| 81-86 | 91-97 | 102-107 | 112-117 | 122-127 | cm |
| 32-34 | 36-38 | 40-42 | 44-46 | 48-50 | in |

Actual bust measurement of garment

| | | | | | |
|-----|-------|-----|-------|-----|----|
| 159 | 168.5 | 179 | 188.5 | 199 | cm |
| 62½ | 66¼ | 70½ | 74¼ | 78¼ | in |

YARN

Summerlite 4 ply and Kidsilk Haze

A 4ply

| | | | | | |
|---|----|----|----|----|--------|
| 9 | 10 | 10 | 11 | 11 | x 50gm |
|---|----|----|----|----|--------|

(photographed in Pure White 417)

B KSH

| | | | | | |
|---|---|---|----|----|--------|
| 8 | 9 | 9 | 10 | 10 | x 25gm |
|---|---|---|----|----|--------|

(photographed in White 612)

NEEDLES

1 pair 3½mm (no 10/9) (US 4) needles

3½mm (no 10/9) (US 4) circular needle at least 120 cm long

3¼mm (no 10) (US 3) circular needle at least 120 cm long

BUTTONS - 4

TENSION

26 sts and 30 rows to 10 cm / 4 in measured over st st using 3½mm (US 4) needles and one strand each of yarns A and B held together.



Pearl ●○○○

Quail Studio

SIZE

To fit bust

| | | | | | |
|-------|-------|---------|---------|---------|----|
| 81-86 | 91-97 | 102-107 | 112-117 | 122-127 | cm |
| 32-34 | 36-38 | 40-42 | 44-46 | 48-50 | in |

Actual bust measurement of garment

| | | | | | |
|------|-------|-------|-------|-------|----|
| 96.5 | 105.5 | 116.5 | 125.5 | 136.5 | cm |
| 38 | 41½ | 45¾ | 49½ | 53¾ | in |

YARN

Summerlite DK

| | | | | | |
|---|---|---|---|---|--------|
| 5 | 6 | 6 | 7 | 7 | x 50gm |
|---|---|---|---|---|--------|

(photographed in Khaki 461 & White 465)

NEEDLES

1 pair 3¾mm (no 9) (US 5) needles

TENSION

22 sts and 30 rows to 10 cm / 4 in measured over rev st st using 3¾mm (US 5) needles.



Feather ●●○○

Quail Studio

SIZE

To fit bust

| | | | | | |
|-------|-------|---------|---------|---------|----|
| 81-86 | 91-97 | 102-107 | 112-117 | 122-127 | cm |
| 32-34 | 36-38 | 40-42 | 44-46 | 48-50 | in |

Actual bust measurement of garment

| | | | | | |
|-------|------------------|------------------|-------|------------------|----|
| 111.5 | 122.5 | 131.5 | 142.5 | 151.5 | cm |
| 44 | 48 $\frac{1}{4}$ | 51 $\frac{3}{4}$ | 56 | 59 $\frac{3}{4}$ | in |

YARN

Kidsilk Haze

| | | | | | |
|----|----|----|----|----|--------|
| 14 | 15 | 15 | 16 | 16 | x 25gm |
|----|----|----|----|----|--------|

(photographed in White 612)

NEEDLES

1 pair 4mm (no 8) (US 6) needles

4mm (no 8) (US 6) circular needle at least 120 cm long

TENSION

26 sts and 27 rows to 10 cm / 4 in measured over patt using 4mm (US 6) needles and yarn DOUBLE.



Pear ●●○○

Quail Studio

SIZE

To fit bust

| | | | | | |
|-------|-------|---------|---------|---------|----|
| 81-86 | 91-97 | 102-107 | 112-117 | 122-127 | cm |
| 32-34 | 36-38 | 40-42 | 44-46 | 48-50 | in |

Actual bust measurement of garment

| | | | | | |
|-----|-----|-----|-----|-----|----|
| 98 | 106 | 116 | 126 | 136 | cm |
| 38½ | 41¾ | 45¾ | 49½ | 53½ | in |

YARN

Handknit Cotton

| | | | | | |
|---|----|----|----|----|--------|
| 9 | 10 | 10 | 11 | 11 | x 50gm |
|---|----|----|----|----|--------|

(photographed in Ecrú 251 & Celery 309)

NEEDLES

1 pair 4½mm (no 7) (US 7) needles

4½mm (no 7) (US 7) circular needle no more than 40 cm long

TENSION

20 sts and 28 rows to 10 cm / 4 in measured over st
st, 16 sts and 20 rows to 10 cm measured over lace
patt, both using 4½mm (US 7) needles.



Cotton ●○○○

Quail Studio

SIZE

To fit bust

| | | | | | |
|-------|-------|---------|---------|---------|----|
| 81-86 | 91-97 | 102-107 | 112-117 | 122-127 | cm |
| 32-34 | 36-38 | 40-42 | 44-46 | 48-50 | in |

Actual bust measurement of garment

| | | | | | |
|------|-------|-------|-------|-------|----|
| 95.5 | 106.5 | 115.5 | 126.5 | 135.5 | cm |
| 37½ | 42 | 45½ | 49¾ | 53¼ | in |

YARN

Summerlite DK

| | | | | | |
|---|---|---|---|---|--------|
| 7 | 7 | 8 | 8 | 9 | x 50gm |
|---|---|---|---|---|--------|

(photographed in White 465)

NEEDLES

1 pair 3¾mm (no 9) (US 5) needles

3¾mm (no 9) (US 5) circular needle no more than 40 cm long

TENSION

22 sts and 30 rows to 10 cm / 4 in measured over st
st using 3¾mm (US 5) needles.



Khaki ●●○○

Quail Studio

SIZE

To fit bust

| | | | | | |
|-------|-------|---------|---------|---------|----|
| 81-86 | 91-97 | 102-107 | 112-117 | 122-127 | cm |
| 32-34 | 36-38 | 40-42 | 44-46 | 48-50 | in |

Actual bust measurement of garment

| | | | | | |
|-----|-----|-----|-----|-----|----|
| 121 | 132 | 141 | 152 | 161 | cm |
| 47¾ | 52 | 55½ | 59¾ | 63½ | in |

YARN

Summerlite DK and Kidsilk Haze

A DK Khaki 461

| | | | | | |
|----|----|----|----|----|--------|
| 15 | 16 | 16 | 17 | 17 | x 50gm |
|----|----|----|----|----|--------|

B KSH Drab 611

| | | | | | |
|----|----|----|----|----|--------|
| 10 | 10 | 10 | 11 | 11 | x 25gm |
|----|----|----|----|----|--------|

NEEDLES

1 pair 4½mm (no 7) (US 7) needles

4mm (no 8) (US 6) circular needle at least 140 cm long

4½mm (no 7) (US 7) circular needle at least 140 cm long

TENSION

18 sts and 26 rows to 10 cm / 4 in measured over rib when slightly stretched using 4½mm (US 7) needles and one strand each of yarns A and B held together.