

# R O W A N



RELEASE ONE: FLORAL HEART SQUARE  
KNITTED WITH LOVE

KAL21-00001-ENP

# KNITTED WITH LOVE



SKILL LEVEL



## YARN

### Island Blend

#### Large Throw

A Lemon 908

B White 900

#### Medium Throw

A Marine 905

B White 900

#### Cushion 1

A Routemaster 909

B White 900

#### Cushion 4

A Moss 907

B White 900

#### Cushion 6

A White 900

B Routemaster 909

## NEEDLES

1 pair 3¼mm (no 9) (US 5) needles

## TENSION

Based on a tension of 22 sts and 30 rows to 10 cm measured over st st using 3¼mm (US 5) needles.

## FINISHED SIZE

Each square measures approx 21 cm (8¼ in) x 21 cm (8¼ in).

For each item, make the number of squares as listed below:

<b>Large Throw</b>	8
<b>Medium Throw</b>	3
<b>Cushion 1</b>	1
<b>Cushion 2</b>	0 (Not applicable to this cushion)
<b>Cushion 3</b>	0 (Not applicable to this cushion)
<b>Cushion 4</b>	1
<b>Cushion 5</b>	0 (Not applicable to this cushion)
<b>Cushion 6</b>	1

## SQUARE 1

Using 3¼mm (US 5) needles and yarn A cast on 47 sts.

**Row 1 (RS):** K1, \*P1, K1, rep from \* to end.

**Row 2:** As row 1.

These 2 rows form moss st.

Cont in moss st for 1 row more, ending with **WS** facing for next row.

**Row 4 (WS):** Moss st 4 sts, M1, moss st to last 4 sts, M1, moss st 4 sts. 49 sts.

Keeping moss st correct, now work in moss st and st st as follows:

**Row 5 (RS):** Moss st 3 sts, K to last 3 sts, moss st 3 sts.

**Row 6:** Moss st 3 sts, P to last 3 sts, moss st 3 sts.

Last 2 rows set the sts – st st with 3 sts still in moss st at each edge.

Cont as set for a further 4 rows, ending with RS facing for next row.

## Place chart

Using the **fairisle** technique as described on the information page and joining in yarn B when needed, now place chart which is worked entirely in st st beg with a K row as follows:

**Row 11 (RS):** Moss st 3 sts, work next 43 sts as row 1 of chart, moss st 3 sts.

**Row 12:** Moss st 3 sts, work next 43 sts as row 2 of chart, moss st 3 sts. Last 2 rows set the sts – colour work from chart in st st with 3 sts still in moss st at each edge.

Cont as set until all 42 rows of chart have been completed.

Break off yarn B and complete square using yarn A only as follows:

**Row 53 (RS):** Moss st 3 sts, K to last 3 sts, moss st 3 sts.

**Row 54:** Moss st 3 sts, P to last 3 sts, moss st 3 sts.

Last 2 rows set the sts – st st with 3 sts still in moss st at each edge.

Cont as set for a further 3 rows, ending with **WS** facing for next row.

**Row 58 (WS):** Moss st 3 sts, P2tog, P to last 6 sts, P2tog, P1, moss st 3 sts. 47 sts.

Work 4 rows in moss st (across all sts) as given for cast on edge, ending with RS facing for next row.

Cast off.

## BLOCKING

Pin out each square to the size given and then either press according to instructions given on ball band, or cover with a clean, damp, white cloth and leave to dry naturally.

Darn in all ends neatly.

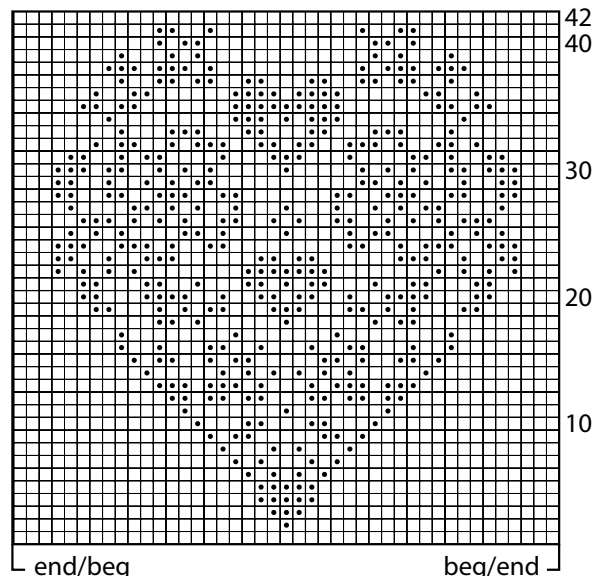
## BACK OF CUSHION

Using 3¼mm (US 5) needles and yarn A cast on 92 sts.

Beg with a K row, work in st st until back measures 42 cm, ending with RS facing for next row.

Cast off.

## Key



### TENSION

Obtaining the correct tension is perhaps the single factor which can make the difference between a successful garment and a disastrous one. It controls both the shape and size of an article, so any variation, however slight, can distort the finished garment. Different designers feature in our books and it is their tension, given at the start of each pattern, which you must match. We recommend that you knit a square in pattern and/or stocking stitch (depending on the pattern instructions) of perhaps 5 - 10 more stitches and 5 - 10 more rows than those given in the tension note. Mark out the central 10cm square with pins. If you have too many stitches to 10cm try again using thicker needles, if you have too few stitches to 10cm try again using finer needles. Once you have achieved the correct tension your garment will be knitted to the measurements indicated in the size diagram shown at the end of the pattern.

### CHART NOTE

Many of the patterns in the book are worked from charts. Each square on a chart represents a stitch and each line of squares a row of knitting. Each colour used is given a different letter and these are shown in the materials section, or in the key alongside the chart of each pattern. When working from the charts, read odd rows (K) from right to left and even rows (P) from left to right, unless otherwise stated. When working lace from a chart it is important to note that all but the largest size may have to alter the first and last few stitches in order not to lose or gain stitches over the row.

### WORKING A LACE PATTERN

When working a lace pattern it is important to remember that if you are unable to work both the increase and corresponding decrease and vice versa, the stitches should be worked in stocking stitch.

### KNITTING WITH COLOUR

There are two main methods of working colour into a knitted fabric: Intarsia and Fairisle techniques. The first method produces a single thickness of fabric and is usually used where a colour is only required in a particular area of a row and does not form a repeating pattern across the row, as in the fairisle technique.

**Fairisle type knitting:** When two or three colours are worked repeatedly across a row, strand the yarn not in use loosely behind the stitches being worked. If you are working with more than two colours, treat the “floating” yarns as if they were one yarn and always spread the stitches to their correct width to keep them elastic. It is advisable not to carry the stranded or “floating” yarns over more than three stitches at a time, but to weave them under and over the colour you are working. The “floating” yarns are therefore caught at the back of the work.

**Intarsia:** The simplest way to do this is to cut short lengths of yarn for each motif or block of colour used in a row. Then joining in the various colours at the appropriate point on the row, link one colour to the next by twisting them around each other where they meet on the wrong side to avoid gaps. All ends can then either be darned along the colour join lines, as each motif is completed or then can be “knitted-in” to the fabric of the knitting as each colour is worked into the pattern. This is done in much the same way as “weaving-in” yarns when working the Fairisle technique and does save time darning-in ends. It is essential that the tension is noted for intarsia as this may vary from the stocking stitch if both are used in the same pattern.

### FINISHING INSTRUCTIONS

After working for hours knitting a garment, it seems a great pity that many garments are spoiled because such little care is taken in the pressing and finishing process. Follow the text below for a truly professional-looking garment.

### PRESSING

Block out each piece of knitting and following the instructions on the ball band press the garment pieces, omitting the ribs. Tip: Take special care to press the edges, as this will make sewing up both easier and neater. If the ball band indicates that the fabric is not to be pressed, then covering the blocked out fabric with a damp white cotton cloth and leaving it to stand will have the desired effect. Darn in all ends neatly along the selvedge edge or a colour join, as appropriate.

### STITCHING

When stitching the pieces together, remember to match areas of colour and texture very carefully where they meet. Use a seam stitch such as back stitch or mattress stitch for all main knitting seams and join all ribs and neckband with mattress stitch, unless otherwise stated.

### CONSTRUCTION

Having completed the pattern instructions, join left shoulder and neckband seams as detailed above. Sew the top of the sleeve to the body of the garment using the method detailed in the pattern, referring to the appropriate guide:

**Straight cast-off sleeves:** Place centre of cast-off edge of sleeve to shoulder seam. Sew top of sleeve to body, using markers as guidelines where applicable.

**Square set-in sleeves:** Place centre of cast-off edge of sleeve to shoulder seam. Set sleeve head into armhole, the straight sides at top of sleeve to form a neat right-angle to cast-off sts at armhole on back and front.

**Shallow set-in sleeves:** Place centre of cast off edge of sleeve to shoulder seam. Match decreases at beg of armhole shaping to decreases at top of sleeve. Sew sleeve head into armhole, easing in shapings.

## INFORMATION

Set-in sleeves: Place centre of cast-off edge of sleeve to shoulder seam. Set in sleeve, easing sleeve head into armhole.

Join side and sleeve seams.

Slip stitch pocket edgings and linings into place.

Sew on buttons to correspond with buttonholes.

Ribbed welts and neckbands and any areas of garter stitch should not be pressed.

Wash as directed on the ball band.

### ABBREVIATIONS

<b>K</b>	knit
<b>P</b>	purl
<b>st(s)</b>	stitch(es)
<b>inc</b>	increas(e)(ing)
<b>dec</b>	decreas(e)(ing)
<b>st st</b>	stocking stitch (1 row K, 1 row P)
<b>g st</b>	garter stitch (K every row)
<b>beg</b>	begin(ning)
<b>foll</b>	following
<b>rem</b>	remain(ing)
<b>rev st st</b>	reverse stocking stitch (1 row K, 1 row P)
<b>rep</b>	repeat
<b>alt</b>	alternate
<b>cont</b>	continue
<b>patt</b>	pattern
<b>tog</b>	together
<b>mm</b>	millimetres
<b>cm</b>	centimetres
<b>in(s)</b>	inch(es)
<b>RS</b>	right side
<b>WS</b>	wrong side
<b>sl 1</b>	slip one stitch
<b>pssso</b>	pass slipped stitch over
<b>p2sso</b>	pass 2 slipped stitches over
<b>tbl</b>	through back of loop

<b>M1</b>	make one stitch by picking up horizontal loop before next stitch and knitting into back of it
<b>M1P</b>	make one stitch by picking up horizontal loop before next stitch and purling into back of it
<b>yfwd</b>	yarn forward
<b>yrn</b>	yarn round needle
<b>meas</b>	measures
<b>0</b>	no stitches, times or rows
<b>-</b>	no stitches, times or rows for that size
<b>yo</b>	yarn over needle
<b>yfrn</b>	yarn forward round needle
<b>wyib</b>	with yarn at back
<b>sl2togK</b>	slip 2 stitches together knitways

### CROCHET TERMS

UK crochet terms and abbreviations have been used throughout. The list below gives the US equivalent where they vary.

### ABBREVIATIONS

<b>UK</b>	(US)
<b>dc (sc)</b>	double crochet (single crochet)
<b>htr (hdc)</b>	half treble (half double crochet)
<b>tr (dc)</b>	treble (double crochet)
<b>dtr (tr)</b>	double treble (treble)

### EXPERIENCE RATING (For guidance only)

#### ● **Beginner Techniques**

For the beginner knitter, basic garment shaping and straight forward stitch technique.

#### ●● **Simple Techniques**

Simple straight forward knitting, introducing various, shaping techniques and garments.

#### ●●● **Experienced Techniques**

For the more experienced knitter, using more advanced shaping techniques at the same time as colourwork or more advanced stitch techniques.

#### ●●●● **Advanced Techniques**

Advanced techniques used, using advanced stitches and garment shapings and more challenging techniques

### BUTTONS, BEADS & RIBBON

#### **Bedecked Haberdashery**

The Coach House  
Barningham Park  
Richmond  
North Yorkshire  
DL11 7DW

**TEL:** +44 (0) 1833 621 451

**eMail:** [thegirls@bedecked.co.uk](mailto:thegirls@bedecked.co.uk)

**Web:** [www.bedecked.co.uk](http://www.bedecked.co.uk)

#### **Groves & Banks**

Eastern Bypass  
Thame  
Oxfordshire  
OX9 3FU

**eMail:** [groves@stockistenquiries.co.uk](mailto:groves@stockistenquiries.co.uk)

**Web:** [www.grovesltd.co.uk](http://www.grovesltd.co.uk)