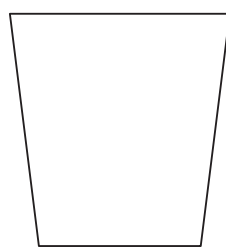


SPRINGFIELD

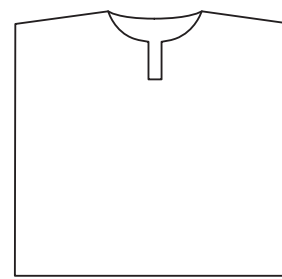
Chloe Thurlow



Sample size 81-86 cm (32-24")



43 [44: 44: 45: 45: 45: 45: 45] cm
(17 [17¼: 17¼: 17¼: 17¼: 17¼: 17¼: 17¼] in)



47.5 [52.5: 57.5: 62.5: 67.5: 72.5: 77.5: 82.5: 88.5] cm
(18¾ [20¼: 22¼: 24½: 26½: 28½: 30½: 32½: 34¾] in)

48 [50: 52: 54: 56: 58: 59: 61: 62] cm
(19 [19½: 20½: 21¼: 22: 22¾: 23¾: 24: 24½] in)

SIZE

To fit chest (cm/in)

71-76	81-86	91-97	102-107	112-117	122-127	132-137	142-147	152-157
28-30	32-34	36-38	40-42	44-46	48-50	52-54	56-58	60-62

Actual chest measurement of garment

95	105	115	125	135	145	155	165	176.5
37½	41¼	45¾	49¾	53¾	57	61	65	69½

YARN

Alpaca Soft DK (50gm)

9	10	11	12	13	13	14	15	16
---	----	----	----	----	----	----	----	----

(photographed in Trench Coat 202)

NEEDLES

1 pair 3¼mm (no 10) (US 3) needles

1 pair 4mm (no 8) (US 6) needles

Cable needle

BUTTONS – 3 x TGB2869 (grey corozo with laser fl wer 18mm) from Textile Garden. Please see information page for contact details.

TENSION

24 sts and 30 rows to 10 cm measured over patt using 4mm (US 6) needles.