

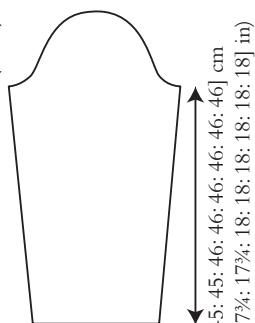
GUISELEY

Anna Hull

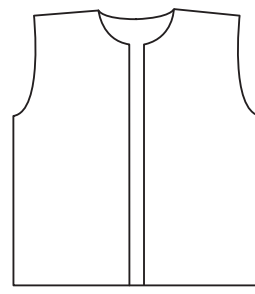


Sample size 81-86 cm (32-34")

13 [14: 15: 16.5: 17: 18.5: 19: 19.5: 19.5] cm
(5 [5½: 6: 6½: 7¼: 7¾: 7¾] in)



44 [45: 45: 46: 46: 46: 46: 46] cm
(17¼ [17¼: 17¾: 18: 18: 18: 18: 18] in)



50 [52: 54: 56: 58: 60.5: 61.5: 63: 64] cm
(19¾ [20¾: 21¼: 22: 22¾: 23¾: 24¼: 24¾: 25¼] in)

41.5 [46.5: 51.5: 57: 62: 67.5: 72.5: 78: 83] cm
(16¼ [18¼: 20¼: 22½: 24½: 26½: 28½: 30¾: 32¾] in)

SIZE

To fit chest (cm/in)

71-76 81-86 91-97 102-107 112-117 122-127 132-137 142-147 152-157

28-30 32-34 36-38 40-42 44-46 48-50 52-54 56-58 60-62

Actual chest measurement of garment

82.5 93 103.5 114 124.5 135 145 155.5 166

32½ 36½ 40¾ 45 49 53¼ 57 61¼ 65¼

YARN

Alpaca Classic (25gm)

A Deep Teal 109

7 8 8 9 10 11 12 13 13

B Green Moss 111

1 1 1 1 1 1 1 2 2

C Toffee 13

1 1 1 1 1 1 1 1 1

NEEDLES

1 pair 3¼mm (no 10) (US 3) needles

1 pair 3¾mm (no 9) (US 5) needles

BUTTONS – 7 x TGB4083 (wooden 15mm) from Textile Garden. Please see information page for contact details.

TENSION

23 sts and 31 rows to 10 cm measured over st st, 26 sts and 28 rows to

10 cm measured over patterned st st, both using 3¾mm (US 5) needles.