

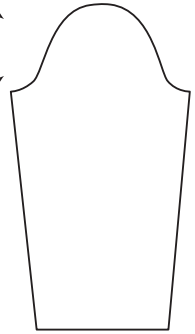
# GLOBE

Lisa Richardson

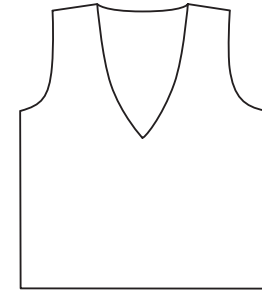


Sample size 81-86 cm (32-34")

13.5 [14.5; 15.5; 16.5; 18; 18.5; 19.5; 20; 20.5] cm  
(5¼ [5½; 6; 6½; 7; 7¼; 7¾; 8] in)



44 [45; 45; 46; 46; 46; 46; 46] cm  
(17¼ [17¼; 17¾; 18; 18; 18; 18; 18] in)



40.5 [46; 51; 56.5; 61; 66.5; 71; 76.5; 82] cm  
(16 [18; 20; 22¼; 24; 26¼; 28; 30; 32¼] in)

52 [54; 56; 58.5; 60; 62; 63; 65; 66] cm  
(20½ [21¼; 22; 23; 23¾; 24½; 25½; 26] in)

## SIZE

To fit chest (cm/in)

71-76 81-86 91-97 102-107 112-117 122-127 132-137 142-147 152-157

28-30 32-34 36-38 40-42 44-46 48-50 52-54 56-58 60-62

Actual chest measurement of garment

81 91.5 102.5 113 122.5 133 142.5 153 164

32 36 40¼ 44½ 48¾ 52¾ 56 60¼ 64½

## YARN

**Felted Tweed** (50gm)

A Cumin 193

3 3 3 4 4 4 4 5 5

B Mint 226

2 2 2 3 3 3 3 3 3

C Barn Red 196

2 2 2 2 3 3 3 3 3

D Alabaster 197

1 1 1 1 1 1 1 1 1

E Watery 152

1 1 1 1 1 1 1 1 1

## NEEDLES

1 pair 3¼mm (no 10) (US 3) needles

1 pair 4mm (no 8) (US 6) needles

## TENSION

26 sts and 26 rows to 10 cm measured over patterned st st, 22 sts and

30 rows to 10 cm measured over st st, both using 4mm (US 6)

needles.