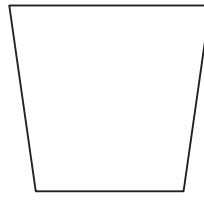


# DIGLEY

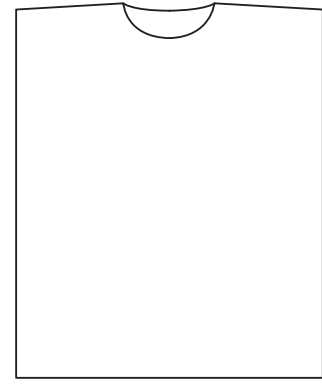
Galina Carroll



Sample size 81-86 cm (32-34")



34.5 [35: 35; 36: 36; 36: 36] cm  
(13½ [13¾: 14¼: 14¼: 14¼: 14¼: 14¼] in)



69 [71: 73: 75: 77: 79: 80: 82: 83] cm  
(27¼ [28: 28¾: 29½: 30¾: 31: 31½: 32¼: 32¾] in)

52.5 [58: 63.5: 69: 73.5: 79: 83.5: 89: 93.5] cm  
20¾ [22¼: 25: 27¼: 29: 31: 32¾: 35: 36¾] in

## SIZE

To fit chest (cm/in)

71-76 81-86 91-97 102-107 112-117 122-127 132-137 142-147 152-157

28-30 32-34 36-38 40-42 44-46 48-50 52-54 56-58 60-62

Actual chest measurement of garment

105.5 116 127 137.5 147 157.5 167 177.5 187

41½ 45¾ 50 54¾ 57¾ 62 65¾ 70 73½

## YARN

**Alpaca Classic** (25gm)

A Green Moss 111

7 7 8 9 10 10 11 12 12

B Purple Rain 123

2 3 3 3 3 4 4 4 4

C Foliage Green 110

2 2 2 3 3 3 3 3 4

## NEEDLES

1 pair 3¼mm (no 10) (US 3) needles

1 pair 3¾mm (no 9) (US 5) needles

## TENSION

26 sts and 27 rows to 10 cm measured over patterned st st using 3¾mm (US 5) needles.