

# OLAUG



## SIZE

To fit bust/chest (cm/in)

81-86	91-97	102-107	112-117	122-127	132-137	142-147	152-157
32-34	36-38	40-42	44-46	48-50	52-54	56-58	60-62

Actual bust/chest measurement of garment

92.5	103.5	114.5	125.5	134.5	145.5	154.5	165.5
36½	40¾	45	49½	53	57¼	60¾	65¼

## YARN

**Norwegian Wool** (50gm)

A Golden Nugget 012

8	9	10	11	12	13	14	15
---	---	----	----	----	----	----	----

B Ribbon Red 018

1	1	1	1	1	1	1	1
---	---	---	---	---	---	---	---

## NEEDLES

Set of 4 double-pointed 3mm (no 11) (US 2/3) needles

Set of 4 double-pointed 3¾mm (no 9) (US 5) needles

3mm (no 11) (US 2/3) circular needle no more than 100 [110: 120: 130: 140: 150: 160: 170] cm long

3¾mm (no 9) (US 5) circular needle no more than 100 [110: 120: 130: 140: 150: 160: 170] cm long

Cable needle

## TENSION

22 sts and 28 rounds to 10 cm measured over st st using 3¾mm (US 5) needles. Cable panel (18 sts) meas 7.5 cm.



# AUD



## SIZE

To fit bust/chest (cm/in)

81-86	91-97	102-107	112-117	122-127	132-137	142-147	152-157
32-34	36-38	40-42	44-46	48-50	52-54	56-58	60-62

Actual bust/chest measurement of garment

111	121	132	141.5	151	161	170.5	180
43¾	47¾	52	55¾	59½	63½	67¼	70¾

## YARN

**Norwegian Wool** (50gm)

A Ribbon Red 018

2	2	2	2	2	2	3	3
---	---	---	---	---	---	---	---

B Coastal Fjord 013

6	6	7	8	8	9	9	10
---	---	---	---	---	---	---	----

C Cloud Dancer 014

5	6	6	7	7	8	8	9
---	---	---	---	---	---	---	---

## NEEDLES

1 pair 3mm (no 11) (US 2/3) needles

1 pair 3¾mm (no 9) (US 5) needles

Optional: 3mm (no 11) (US 2/3) circular needle and 3¾mm (no 9) (US 5) circular needle, both at least 100 cm long

## TENSION

25 sts and 24 rows to 10 cm measured over patterned st st using 3¾mm (US 5) needles.

## Pattern note

When working the back and front, you may prefer to use a circular needle to accommodate the large number of sts. Use in the same way as straight needles, working backwards and forwards in rows and turning at the end of each row.



# SILJE



## SIZE

To fit bust/chest (cm/in)

81-86	91-97	102-107	112-117	122-127	132-137	142-147	152-157
32-34	36-38	40-42	44-46	48-50	52-54	56-58	60-62

Actual bust/chest measurement of garment

110	121	132	141	152	161	172	181
43¼	47¾	52	55½	59¾	63½	67¾	71¼

## YARN

**Norwegian Wool** (50gm)

A Coastal Fjord 013

2	2	3	3	3	3	3	4
---	---	---	---	---	---	---	---

B Daphne 011

6	7	7	8	9	9	10	11
---	---	---	---	---	---	----	----

C Mountain 022

1	1	1	2	2	2	2	2
---	---	---	---	---	---	---	---

D Frost Pink 020

1	2	2	2	2	2	2	2
---	---	---	---	---	---	---	---

E Golden Nugget 012

1	1	1	1	1	1	1	1
---	---	---	---	---	---	---	---

## NEEDLES

1 pair 3mm (no 11) (US 2/3) needles

1 pair 3¾mm (no 9) (US 5) needles

Optional: 3mm (no 11) (US 2/3) circular needle and 3¾mm (no 9) (US 5) circular needle, both at least 100 cm long

## TENSION

22 sts and 28 rows to 10 cm measured over st st and patterned st st using 3¾mm (US 5) needles.

## Pattern note

When working the back and front, you may prefer to use a circular needle to accommodate the large number of sts. Use in the same way as straight needles, working backwards and forwards in rows and turning at the end of each row.



# HALDIS



## YARN

### Norwegian Wool (50gm)

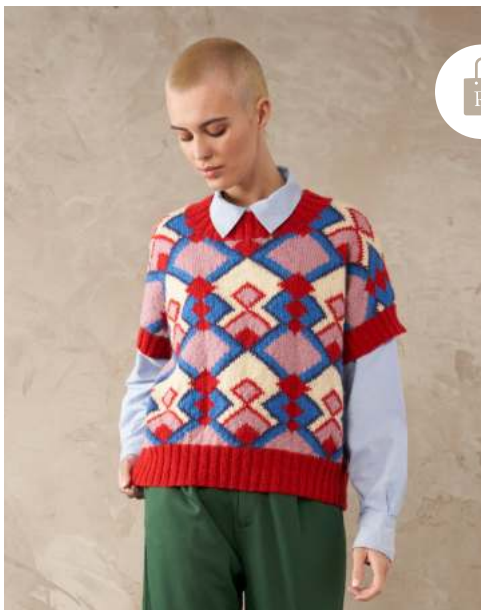
A Wind Chime 010	4
B Red Velvet 023	1
C Daphne 011	1
D Ribbon Red 018	1

## NEEDLES

3¾mm (no 9) (US 5) circular needle no more than 140 cm long

## TENSION

22 sts and 28 rounds to 10 cm measured over st st using 3¾mm (US 5) circular needle.



# GUDRUN



## SIZE

To fit bust (cm/in)

71-76	81-86	91-97	102-107	112-117	122-127	132-137	142-147	152-157
28-30	32-34	36-38	40-42	44-46	48-50	52-54	56-58	60-62

Actual bust measurement of garment

99	110	121	130	141	152	161	172	181
39	43¼	47¾	51¼	55½	59¾	63½	67¾	71¼

## YARN

**Norwegian Wool** (50gm)

A Ribbon Red 018

3	3	4	4	4	5	5	5	6
---	---	---	---	---	---	---	---	---

B Frost Pink 020

2	2	2	2	2	2	3	3	3
---	---	---	---	---	---	---	---	---

C Daphne 011

2	2	2	2	2	3	3	3	3
---	---	---	---	---	---	---	---	---

D Coastal Fjord 013

1	1	1	1	1	1	1	1	1
---	---	---	---	---	---	---	---	---

E Vanilla Custard 021

2	2	2	2	2	2	2	3	3
---	---	---	---	---	---	---	---	---

## NEEDLES

1 pair 3mm (no 11) (US 2/3) needles

1 pair 3¾mm (no 9) (US 5) needles

Optional: 3mm (no 11) (US 2/3) circular needle and 3¾mm (no 9) (US 5) circular needle, both at least 100 cm long

## TENSION

22 sts and 28 rows to 10 cm measured over patterned st st using 3¾mm (US 5) needles.

Pattern note

When working the back and front, you may prefer to use a circular needle to accommodate the large number of sts. Use in the same way as straight needles, working backwards and forwards in rows and turning at the end of each row.



# ARNULF



## SIZE

One size to fit average adult head

## YARN

**Norwegian Wool** (50gm)

A Coastal Fjord 013

2

B Ribbon Red 018

1

C Cloud Dancer 014

1

## NEEDLES

3¼mm (no 10) (US 3) circular needle no more than 40 cm long

3¾mm (no 9) (US 5) circular needle no more than 40 cm long

## TENSION

25 sts and 24 rounds to 10 cm measured over patterned st st using 3¾mm (US 5) circular needle.



# RANVEIG



## SIZE

To fit bust/chest		(cm/in)						
81-86	91-97	102-107	112-117	122-127	132-137	142-147	152-157	
32-34	36-38	40-42	44-46	48-50	52-54	56-58	60-62	
Actual bust/chest measurement of garment								
95	105	116	127	137	148	157.5	16	
37½	41¼	45¾	50	54	58¼	62	66½	

## YARN

### Norwegian Wool (50gm)

A Frost Pink 020							
3	3	4	4	4	5	5	5
B Emerald 017							
1	2	2	2	2	2	2	2
C Cloud Dancer 014							
5	5	6	7	7	8	8	9

## NEEDLES

1 pair 3mm (no 11) (US 2/3) needles

1 pair 3¾mm (no 9) (US 5) needles

Optional: 3mm (no 11) (US 2/3) circular needle at least 100 cm long

Optional: 3¾mm (no 9) (US 5) circular needle at least 100 cm long

## TENSION

22 sts and 28 rows to 10 cm measured over st st, 25 sts and 24 rows to 10 cm measured over patterned st st, both using 3¾mm (US 5) needles.

## Pattern note

When working the back and front, you may prefer to use a circular needle to accommodate the large number of sts. Use in the same way as straight needles, working backwards and forwards in rows and turning at the end of each row.



# BO



## SIZE

To fit an average size woman's [man's] hand

## YARN

### Norwegian Wool

#### Woman's version (small size)

A Ribbon Red 018

1

B Red Velvet 023

1

C Cloud Dancer 014

1

#### Man's version (large size)

A Ribbon Red 018

1

B Coastal Fjord 013

1

C Cloud Dancer 014

1

## NEEDLES

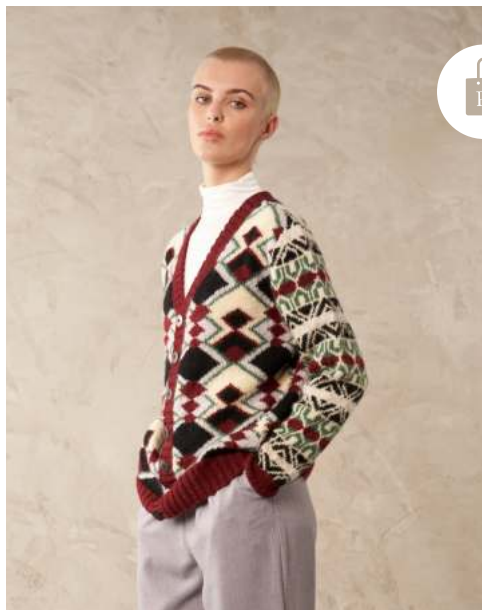
Set of 5 double-pointed 3mm (no 11) (US 2/3) needles

Set of 5 double-pointed 3¾mm (no 9) (US 5) needles

## TENSION

25 sts and 24 rounds to 10 cm measured over patterned st st using 3¾mm (US 5) needles.





# HENNING



## SIZE

To fit bust/chest (cm/in)

81-86	91-97	102-107	112-117	122-127	132-137	142-147	152-157
32-34	36-38	40-42	44-4	48-50	52-54	56-58	60-62

Actual bust/chest measurement of garment

110	121	132	141	152	161	172	181
43¼	47¾	52	55½	59¾	63½	67¾	71¼

## YARN

**Norwegian Wool** (50gm)

A Red Velvet 023

4	4	5	5	5	6	6	6
---	---	---	---	---	---	---	---

B Peat 019

3	3	4	4	4	4	5	5
---	---	---	---	---	---	---	---

C Frost Grey 016

2	3	3	3	3	3	4	4
---	---	---	---	---	---	---	---

D Emerald 017

2	2	3	3	3	3	3	3
---	---	---	---	---	---	---	---

E Vanilla Custard 021

3	4	4	5	5	5	6	6
---	---	---	---	---	---	---	---

## NEEDLES

1 pair 3mm (no 11) (US 2/3) needles

1 pair 3¾mm (no 9) (US 5) needles

3mm (no 11) (US 2/3) circular needle at least 100 cm long

Optional: 3¾mm (no 9) (US 5) circular needle at least 100 cm long

**BUTTONS** – 7 x metal 2.2 cm buttons.

## TENSION

22 sts and 28 rows to 10 cm measured over st st and intarsia st st, 25 sts and 24 rows to 10 cm measured over fairisle st st, all using 3¾mm (US 5) needles.

## Pattern note

When working the back, you may prefer to use a circular needle to accommodate the large number of sts. Use in the same way as straight needles, working backwards and forwards in rows and turning at the end of each row.