

CLASSIC ARAN SWEATER

To fit bust/chest

81-86	91-97	102-107	112-117	cm
32-34	36-38	40-42	44-46	in

Actual measurements

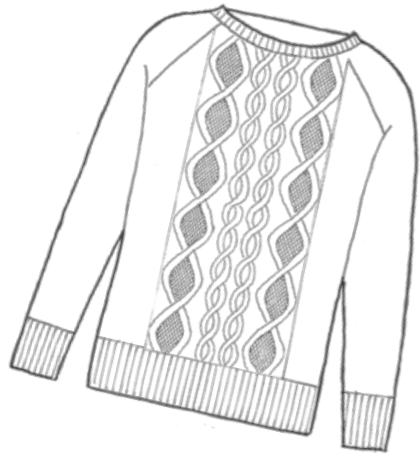
Bust/Chest

94	107	118	131	cm
37	42	46½	51½	in

Length to shoulder

68	70	72	74	cm
26¾	27½	28¼	29	in

Sleeve length 51cm/20in



YARN

13(14:15:16) × 50g balls Rowan
Hemp Tweed Almond 141.

NEEDLES

Pair each 4mm (US 6) and
4.5mm (US 7) knitting needles.
Cable needle.

TENSION

19 sts and 25 rows to 10cm/4in
square over st st using 4.5mm
(US 7) needles.
Cable panel (62sts) measures
28cm (11in) across width.