



Kirkby

by Martin Storey



SIZE

M	L	XL	
To fit bust/chest			
102	107	112	cm
40	42	44	in

YARN

Rowan Felted Tweed Aran

13 14 15 17 18 19 x 50gm
(photographed in Mahogany 734)

NEEDLES

1 pair 4mm (no 8) (US 6) needles
1 pair 5mm (no 6) (US 8) needles
Cable needle

TENSION

16 sts and 23 rows to 10 cm measured over stocking stitch using 5mm (US 8) needles.

SPECIAL ABBREVIATIONS

C4B = Cable 4 back Slip next 2 sts onto cable needle and leave at back of work, K2, then K2 from cable needle

C4F = Cable 4 front Slip next 2 sts onto cable needle and leave at front of work, K2, then K2 from cable needle

Cr4R = Cross 4 right Slip Slip next st onto cable needle and leave at back of work, K3, then P (or K depending on point in patt) st from cable needle

Cr4L = Cross 4 left Slip next 3 sts onto cable needle and leave at front of work, P (or K depending on point in patt) 1 st, then K3 from cable needle

C7B = Cable 7 back Slip next 4 sts onto cable needle and

leave at back of work, K3, then K4 from cable needle

MB = Make bobble (K1, yfwd, K1, yfwd, K1) all into next st, turn, P5, turn, K5, turn, P2tog, K1, P2tog, turn, sl 1, K2tog, pssso

BACK

Cast on 93 (97: 101) sts using 4mm (US 6) needles.

Row 1 (RS): K0 (0: 1), P3 0 (2: 3), *K3, P3, rep from * to last 3 (5: 1) sts, K0 3 (3: 1), P0 (2: 0).

Row 2: P0 (0: 1), K3 0 (2: 3), *P3, K3, rep from * to last 3 (5: 1) sts, P3 (3: 1), K0 (2: 0).

These 2 rows form rib.

Work in rib for a further 15 rows, ending with a RS row.

Row 18 (WS): Rib 18 (20: 22), *(M1, rib 1) 5 times, M1, rib 10, (M1, rib 1) twice, M1, rib 9, rep from * 1 times more, (M1, rib 1) 5 times, M1, rib to end.

117 (121: 125) sts.

Change to 5mm (US 8) needles.

Cont in patt as folls:

Row 1 (RS): (K1, P1) 5 (6: 7) times, *work next 27 sts as row 1 of cable chart, P1, C4B, K2, P1, rep from * 1 times more, work next 27 sts as row 1 of cable chart, (P1, K1) to end.

Row 2: (K1, P1) 5 (6: 7) times, *work next 27 sts as row 2 of cable chart, K1, P6, K1, rep from * 1 times more, work next 27 sts as row 2 of cable chart, (P1, K1) to end.

Row 3: (K1, P1) 5 (6: 7) times, *work next 27 sts as row 1 of cable chart, P1, K2, C4F, P1, rep from * 1 times more, work next 27 sts as row 1 of cable chart, (P1, K1) to end.

Row 4: As row 2.

These 4 rows set the sts - 3 cable panels separated by cables and moss st at sides.

Keeping sts correct as set, cont as folls:

Cont straight until back measures 45 (46: 47) cm, ending with a WS row.

Shape armholes

Keeping patt correct, cast off 5 (6: 7) sts at beg of next 2 rows. 107 (109: 111) sts.

Dec 1 st at each end of next 3 rows, then on foll 2 alt rows, then on foll 4th row. 95 (97: 99) sts.

Cont straight until armhole measures 23 (24: 25) cm, ending with a WS row.

Shape shoulders and back neck

Cast off 6 (11) sts at beg of next 2 rows.

73 (75: 77) sts.

Next row (RS): Cast off 11 sts, patt until there are 14 sts on right needle and turn, leaving rem sts on a holder.

Work each side of neck separately.

Cast off 4 sts at beg of next row.

Cast off rem 10 sts.

With RS facing, rejoin yarn to rem sts, cast off centre 23: (25: 27) sts dec 6 sts evenly, patt to end.

Complete to match first side, reversing shapings.

FRONT

Work as given for back until 12 rows less have been worked than on back to start of shoulder shaping, ending with a WS row.

Shape neck

Next row (RS): Patt 39 sts and turn, leaving rem sts on a holder.

Work each side of neck separately.

Dec 1 st at neck edge of next 3 rows, then on foll 4 alt rows, ending with a WS row. 32 sts.

Shape shoulder

Cast off 11 sts at beg of next and foll alt row.

Work 1 row.

Cast off rem 10 sts.

With RS facing, rejoin yarn to rem sts, cast off centre 17 (19: 21) sts dec 6 sts evenly, patt to end.

Complete to match first side, reversing shapings.

SLEEVES (both alike)

Cast on 39: (41: 43) sts using 4mm (US 6) needles.

Row 1 (RS): K0 (1: 2), P3, *K3, P3, rep from * to last 0 (1: 2) sts, K0 (1: 2), P0.

Row 2: P0 (1: 2), K3, *P3, K3, rep from * to last 0 (1: 2) sts, P0 (1: 2), K0.

These 2 rows form rib.

Work in rib for a further 15 rows, ending with a RS row.

Row 18 (WS): Rib 17: (18: 19), (M1, rib 1) 5 times, M1, rib to end. 45 (47: 49) sts.

Change to 5mm (US 8) needles.

Cont in patt as folls:

Row 1 (RS): Inc in first st, P0 (1: 0), (K1, P1) 4 (4: 5) times, work next 27 sts as row 1 of cable chart, (P1, K1) 4 (4: 5) times, P0 (1: 0), inc in last st.

47 (49: 51) sts.

Row 2: P0 (1: 0), (K1, P1) 5 (5: 6) times, work next 27 sts as row 2 of cable chart, (P1, K1) 5 (5: 6) times, P0 (1: 0).

These 2 rows set the sts – cable panel with moss st at sides.

Keeping sts correct as set, cont as folls:

Inc 1 st at each end of 7th and every foll 10th 8th row to 55 (61: 65) sts, then on every foll 6th row until there are 71 (73: 75) sts, taking inc sts into moss st.

Cont straight until sleeve measures 48 (49: 50) cm, ending with a WS row.

Shape top

Keeping patt correct, cast off 5 (6: 7) sts at beg of next 2 rows. 61 sts.

Dec 1 st at each end of next 3 rows, then on foll alt row, then on every foll 4th row until 45 sts rem.

Work 1 row, ending with a WS row.

Dec 1 st at each end of next and foll 3 alt rows, then on foll 3 rows, ending with a WS row. 31 sts.

Cast off 5 sts at beg of next 2 rows. 21 sts.

Cast off rem 21 sts.

MAKING UP

PRESS as described on the information page.

Join right shoulder seam using back stitch, or mattress st if preferred.

Collar

With RS facing and using 4mm (US 6) needles, pick up and knit 16 sts down left side of neck, 12 (15: 15) sts from front, 16 sts up right side of neck, then 28 (31: 31) sts from back. 72 (78: 78) sts.

Row 1 (WS): *P3, K3, rep from * to end.

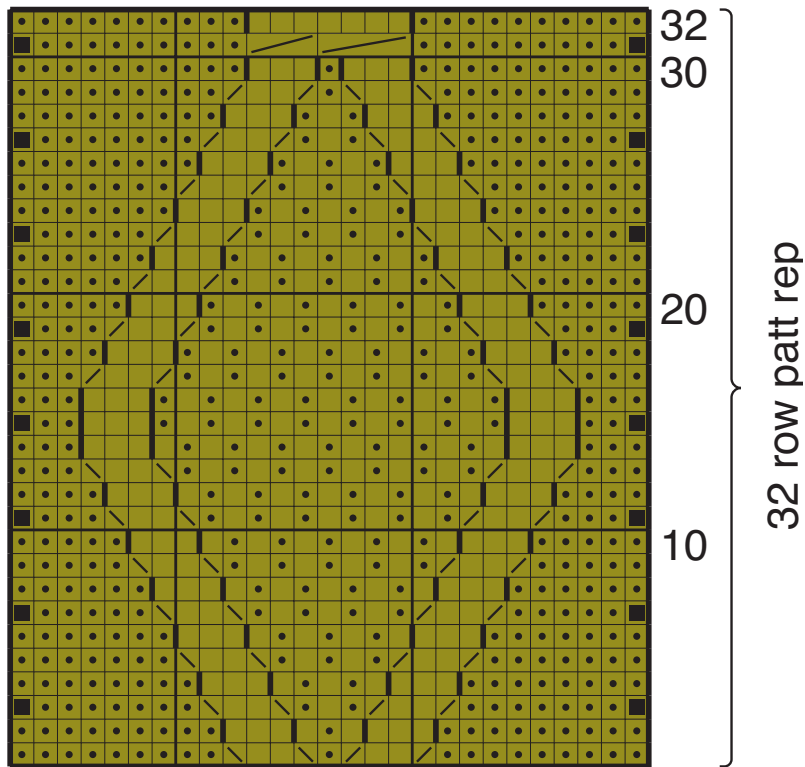
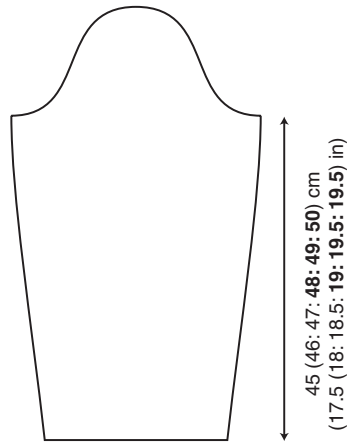
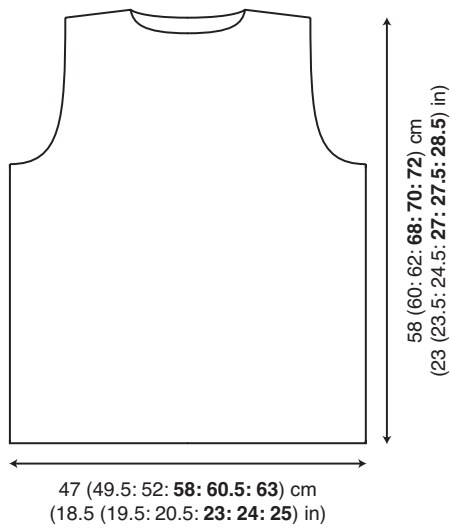
Rep this row until collar measures 5 cm.

Change to 5mm (US 8) needles.

Cont in rib until collar measures 16 cm.

Cast off in rib.

See information page for finishing instructions, setting in sleeves using the set-in method and reversing collar seam for turn-back.



Key

- K on RS, P on WS
- P on RS, K on WS
- make bobble
- ▧ Cr4R
- ▨ Cr4L
- ▩ C7B